



STAR TREK


THE NEXT GENERATION

BEGINNINGS



ISBN: 1-56389-200-6

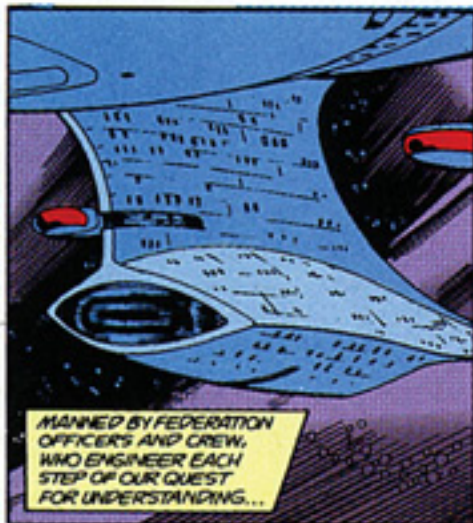
INTRODUCTION BY MICHAEL OKUDA



CAPTAIN'S LOG:
STARGATE
41187.5


THE U.S.S. ENTERPRISE
SLICES THROUGH THE
PITCH THICKNESS OF
AN UNMAPPED SECTOR
LIKE A SHAFI.

HER OWN LEGEND, AND THOSE OF HER
PREDECESSORS, SERVING US AS
FUEL FOR THIS AND ALL HER
SUBSEQUENT MISSIONS.



...PROPELLING US FURTHER
AND DEEPER THAN
EVER BEFORE--

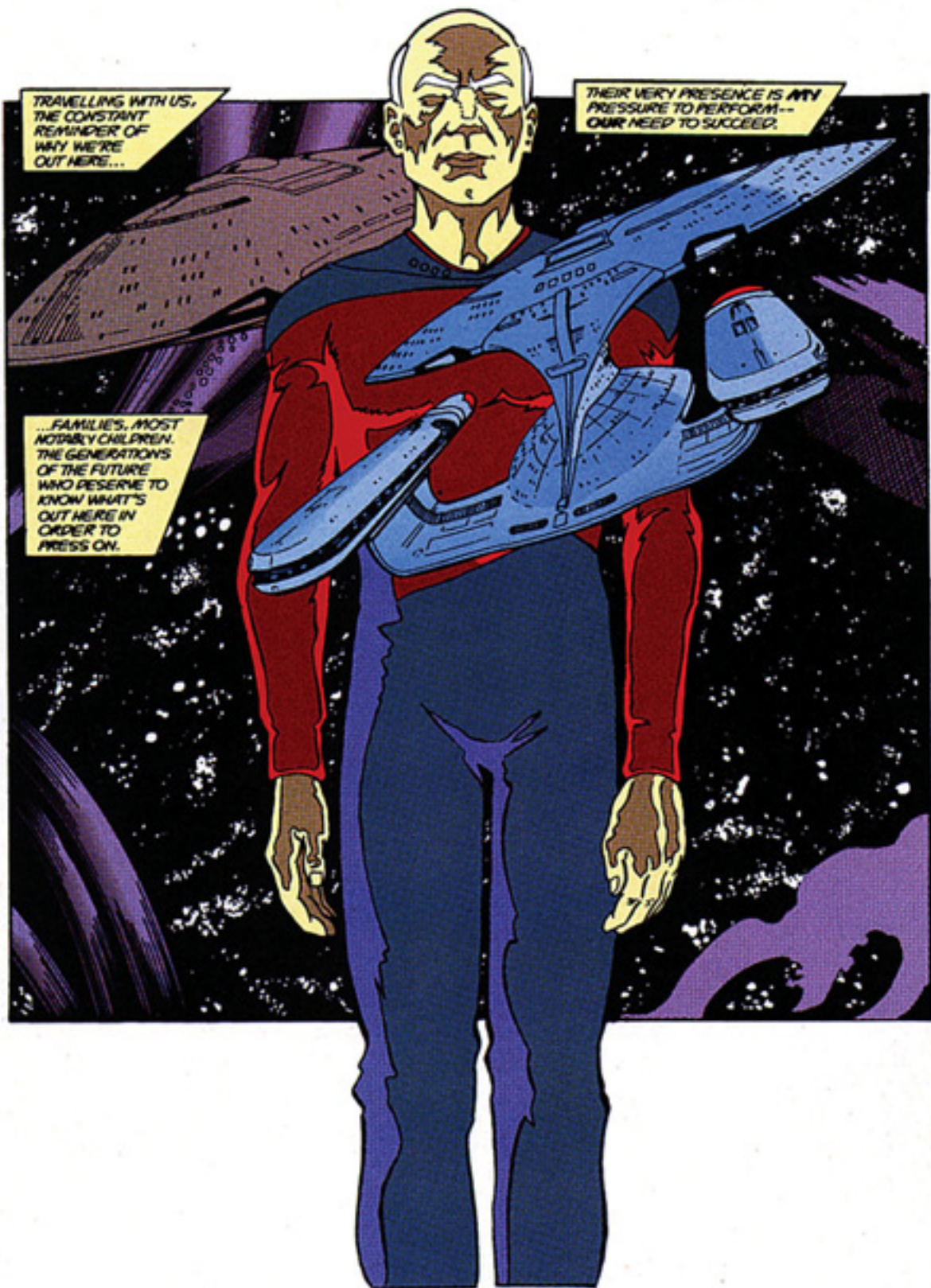
--IN A SEEMINGLY ENDLESS
THRUST FOR KNOWLEDGE
AND HARMONY.



TRAVELLING WITH US,
THE CONSTANT
REMINDER OF
WHY WE'RE
OUT HERE...

THEIR VERY PRESENCE IS MY
PRESSURE TO PERFORM--
OUR NEED TO SUCCEED.

...FAMILIES, MOST
NOTABLY CHILDREN,
THE GENERATIONS
OF THE FUTURE
WHO DESERVE TO
KNOW WHAT'S
OUT HERE IN
ORDER TO
PRESS ON.



THAT'S WHAT DRIVES EACH AND EVERY ONE OF MY BRIDGE CREW...

STILL OUT OF RANGE, LIEUTENANT YAR.

UNDERSTANDABLE, LT. **WORF**--KEEP US POSTED.

MUCH THE WAY I PREFER LONG TREKS.

AS YOU PREDICTED, COUNSELOR **TROI**--A RATHER UNEVENTFUL TRANSPORT THROUGH THE SECTOR.

MY RECORD FOR FAULTLESS PROJECTIONS IS NOT QUITE ONE HUNDRED PERCENT.

SEEMS YOU'RE EXCITED ABOUT EACH AND EVERY MISSION, LIEUTENANT COMMANDER **DATA**--

...BUT STEADY AS SHE GOES...IN REGARDS BOTH TO THE SHIP AND YOUR OWN ADRENAL FLUIDS.

WORF, NOTE TIME UNTIL CONTACT.

LIEUTENANT **LAForge**, ENTER A HOLDING COMMAND FOR WHEN WE'RE IN T-B 13'S ORBIT.